



September 8 — 30



October 20 — November 11



December 7 - 17, 2023

Season 75 is going to be our Diamond Anniversary and we have some true gems to share with you!

We have mined the theatrical world to bring you a dazzling selection of five plays never seen before on our stage, plus every Annapolitan's favorite traditional Yuletide redemption story.

We hope you'll join us as we delve into this season of glorious treasures!



March 1 - 30, 2024



January 12 - February 3, 2024



April 26 - May 18, 2024

SUMMER WORKSHOPS

The Colonial Players will be holding several workshops over the summer highlighting several areas and ways to get involved with theatre, and what goes on behind the scenes. Workshops will cover Set Design, Costuming, Lighting, and the always awe inspiring Stage Management, plus many more!

All details will be available on the website shortly.

Come and Play!

RAVENSCROFT



MAY 19 - JUNE 10, 2023 2022/2023 season



THE COLONIAL PLAYERS, INC.

108 East Street,
Annapolis, MD 21401

T: 410-268-7373

thecolonialplayers.org

BOARD OF DIRECTORS

- Corporate Officers:
- President..... Steve Tobin

Vice President..... John Purnell

Secretary.....Christina Hudson

Treasurer..... George King
- Directors:
- Artistic.....Darice Clewell

Education & Special Projects.....Vacant

Human Resources..... Beth Terranova

Marketing..... Amy Atha-Nicholls

Operations..... Wes Bedsworth


Production.....Ernie Morton





FOLLOW US:

THECOLONIALPLAYERS



CPLAYERS

FRONT OF HOUSE

- Box Office
-Kaelynn Bedsworth
-June Fordham
-Cindy Dawson
-Kevin Brennan
-Barbara Ahr
-Jeanie Mincher
-Jane Chambers
- Subscriptions.....June Fordham
-Cindy Dawson
-Mary Beth Yablonski
- Usher Coordinator.....Loretta Lamar

PRESIDENT’S MESSAGE

The end of a season always fills me with a bunch of mixed emotions: excitement, exhaustion, gratitude, relief, anticipation, and yes even a bit of wistful melancholy....

This is a chance to look back and reflect on all of the hard work - and fun - that we've had in this "season of transition". We've had great comedies that tackle some serious questions, intense dramas with laugh-out-loud comic moments, a "greatest hits" musical from one of the most important figures in American musical theater history, and we wrap it up with the murder mystery comedy, Ravenscroft - one of our favorite genres. In most respects this was a "classic" CP season, and I couldn't be prouder of what all of our volunteers, onstage and off, have done this year.

But through it all, we have been undergoing a slow but necessary change. As you've heard me say (or read from me before), we've had to make some hard adjustments in how we run our organization. Even while we gear ourselves up to celebrate our 75th Anniversary season, we've had to cut back our programming. Things are so much more difficult now than they ever were, as the complexities of the world we live in run headlong against volunteer burn-out. As much as we might wish it, we just can't go back to the "Hey! Let's put on a show!" days, given everything we have to deal with. Our Long Range Planning Committee (led by Board VP John Purnell) is looking at many areas to keep us moving forward in a sustainable way. Everything from the way we govern ourselves and how our facilities might evolve, to how we support our community and our members is on the table. I encourage everyone to help us with that evolution as we chart our path for the next 5 to 10 years..

So that's the reflective, introspective emotions dealt with! Let's get on with the celebration. As we say a fond farewell to Season 74, and look forward with excitement to Season 75, I'll conclude by saying a heartfelt THANK YOU to our audiences and the Annapolis/Anne Arundel community for sticking with us through these last pandemic years, and for the 70+ years before that. Have a wonderful summer, and we'll see you in the Fall!

— STEVE TOBIN

The Colonial Players wishes to express heartfelt gratitude to our patrons. We appreciate your support!

PRODUCTION STAFF

- Director.....Alex Brady
- Producer.....Rebecca Kotraba
- Stage Manager.....Hannah Housley
- Assistant Stage Manager.....Abigail Traverson
- Set Designer.....Carrie Brady
- Properties Designer.....Carrie Shade
- Lighting Designer.....Ernie Morton
- Sound Designer.....Richard Atha-Nicholls
- Costume Designer.....Christina McAlpine
- Hair Designer.....Rebecca Kotraba
- Set Painters.....Carrie Brady
- Stage Combat Choreographer.....Tyler Heroux
- Lead Carpenter.....Ted Yablonski
- Set Crew.....Jim Robinson, Ken Kaiser, Bob Mumper, Edd Miller
- Video Stream Designer.....Sue Ann Staake
- Booth Technicians.....Karyn Fry, Lyana Morton, Laura Taylor
- Play Consultant.....Edd Miller

IN ASSOCIATION WITH

- Poster and Program Cover Design.....Drama Queen Graphics
- PhotographerBrandon Bentley

Taking photographs and using any recording devices are strictly prohibited.

Smoking is prohibited throughout the building.

TO OUR CONTRIBUTORS

Thank you for your support. Your generous gifts help us to continue to provide educational and training programs, encouragement and entertainment to all who are interested in dramatic arts.

LIFE MEMBERS

Chris Beaton
Fred Fishback
Bill & Peggy Griswold
Daniel G. Higgs
Judi Hilton-Hyde
Frank McLane Hyde
Ronald Powell
Dr. & Mrs. James W. Ross
Col. USMC (Ret.) Richard W. Smith
Mrs. Benjamin B. Wills, Jr.

EXECUTIVE PRODUCERS

(\$1,000+)
Arthur H. Kudner, Jr. Fund
Art & Leslie Kudner
Mary Ellen Moorman*
John Purnell
Margaret Ross

PRODUCERS

(\$500 - \$999)
Susanne Brogan & David Bliden
James W. Cheevers
Lisa & Richard Hillman
Bob Sherer

DIRECTORS

(\$200 - \$499)
Anonymous
Bill Allen and Jenna Lane
Nick & Janet Berry
Tim & Kris Brown
Cheryl Cook*
Neal Eaton & Debbie Barber-Eaton
Fred & Susan Eckert
Jerry & Lynne Hoot
Meg Hosmer
Ronald & Nancy Jarashow
Gary & Janice Jobson
Christine Jorgenson
Lois & Noel Milan
Joyce C. Miller
Phil & Sandy Ourisson
Jim & Charlotte Robinson
Fred Sussman & Sharon Kolstad
Beth Terranova
John & Judi Wobensmith
Mary Beth and Ted Yablonski

STAGE MANAGERS

(\$125 - \$199)
Pat & Karen Brown
Cynthia Dawson
June Fordham
Mark & Patti Gillen
Maryellen & Bill Hartman
Tylar & Carol Ann Hecht
Alice Kurs
Kathy & Dave Larrabee
Maggie and Craig Leffler
Hank & Betsy Mortimer
Manfred Muecke
Carol Schadelbauer
Rolph & Joan Townshend
Pat & Stephen Troy

DESIGNERS

(\$75 - \$124)
Susan Armstrong
Don & Lucy Arthur

Mary Evelyn Bell
Nick Beschen*
Bernie & Irene Bise
Scott Bloom
Dick & Jill Breen
Nancy C. Brosnihan
Beverly Creighton
Timothy Dangel
Julia Erickson
Cynthia Garn
Doris Gomoljak
Helena Hunter
Bernard & Hannah Kaufman
Michael J. Keller
Lynne Malley
Paula Mason, in Honor of John Purnell
Pam Mussenden
Siobhan Percey
Constance & John Robinson
Michele & Earl Schaffer
Judith Schuyler
Philip Tawes
Elisabeth Wells
Francis Wright
Karen Wright
John & Judy Youngblood
Mark Zablotny

SPONSORS

(\$50 - \$74)
Sandra Altherr
Ken Apfel & Caroline Hadley
Carol Baker
Lois Banscher
Kimberly Barker
Barker Studios360
John Bartlett
Suzanne Brayman
Steven Briggs
Barbara & Bruce Burns
Carol Carman
Jim & Pat Church
Codner-Jarashow Family
Ed & Carolyn Cohee
Suzanne Colbert*
Lois & Jack Coon
Dianne Crews
Cynthia Curtis
Carol DeGarmo
Gordon & Brenda Duvall
JR and Deborah Frantz
Claire Gardner
Sheldon Goettel
Valerie Gutterson
Jeanette Halleran
Douglas Hannum
Linda & Richard Harrison
Karen Hirakawa
Jerry Hopkins
Elia & John Howser
Kevin Hurley
Margaret Johnson
Christopher & Rebecca Jones
John Kadas
Anza Manning

Barbara Marder
Diane McBee
Miller & Para Families
Craig Mummey
Pat Mutschler
Jane Nelson
Barbara Novak
David Pierce
Elizabeth Royer
Bob & Priscilla Schneider
Beth Shoults
Joseph Slayton
Larry & Kay Snyder
Monica Strohecker
Tom Stuckey
Joanne L. Trepp
Dr. Jim & Gail Wise
William Woodward
John Woolums
Donald Worm
David Zinnamon

PATRONS

(\$35 - \$49)
Maria Alessandri
Carol Amoia
John Bartlett
Robert Beguelin
Fay Blueford
Janet Budzyna
Jane Chambers
Darice Clewell
Anthony Closson
Marilyn Courtney
Marianne M. Gill
Stu Goldstone
Peter Graze
Max & Toby Green
Khalilah Imperatrice
Emily Joyce
Eugenia Judge
Donna Korn
Michael Long
Catherine Macaulay
Meghan McClelland
Tammy McGuire
Rosemary K. Mayne
Barbara Mersereau
Susan Miller
Susan Millman
Bill & Priscilla Mitchell
Laurie Nolan & John McClure
Ed & Jeanne Pagle
Kim Piasecki
Allan Poffel
Reggie & Dick Ray
Amy Rosacker
Ellen Rosenberger
Terry Slattery
Susan Starkey
Elli Swink
Loretta Walz
David Wynkoop

*In Memory of Frank Moorman

DIRECTOR'S NOTES

Our daily lives are filled with little moments of honesty and dishonesty. The white lie we tell to protect a partner's feelings. The honest affection of a friend reaching out to check in. The eponymous fib we all tell our bosses: "I've been working on that. Let me get it to you by the end of the day." The truths we share in a close and quiet moment. Rarely do we see the sudden and revelatory expression of truth or lies on such a grand scale as we find on-stage in the theater.

But then we add pressure.

Suddenly we live in a world of revelations, secret stories exploding from behind the scenes. Long kept lies are discarded in favor of truth because the immense pressure of impulsivity outweighs the convenience of fabrication. The family secret kept for long years suddenly erupts into an argument. A friend comes out of the closet, revealing their true self. An illicit affair is brought into the light. A bold but impossible confession of true love. Maybe even the revelation of a crime.

Ravenscroft is a play about lies, secrets, misdirection, and confessions. It is about the various forms of pressure that it takes to eventually reach the honest truth, rather than the most broadly convenient or acceptable lie. The intimacy of touch; the shock of violence; and the vanishing inhibitions that come with a few drinks are all forms of pressure that reveal our carefully curated social lives to be fraught with fragile lies.

So, should we then indulge in the revelation of our secret indiscretions, our secret crimes, our secret emotions, and most of all our secret affections? Should we hold the impulse for truth so dearly that we let it cost us the comfort and convenience of our carefully constructed worlds? Should we fight against the pressure that urges us to reveal that which is hidden and become our true selves? What wisdom can there be in a ceaseless adherence to the truth at any cost?

In Vino Veritas.

— Alex Brady

ABOUT THE DIRECTOR



Alex Brady has previously directed *The White Rose* and *'Identity Crisis* for The Colonial Players. He has performed onstage in several exciting roles, most recently as *Macbeth* with The Theatre @AACC. Brady is a critically acclaimed lighting designer with more than 20 years of experience working in professional, academic, and community theaters across Maryland, Northern Virginia, and Washington D.C. He has received critical acclaim and been nominated for multiple awards for his inventive and subtle approach to lighting design. Brady

was the long-time resident lighting designer for the AACC Dance Company, where he worked with renowned choreographer Lynda Fitzgerald. He regularly volunteers his talents with local high schools including Saint Mary's High School, as a designer and technical advisor. He is a full-time audio engineer and an adjunct faculty member at Anne Arundel Community College, where he teaches courses in film and architectural history. Brady is an alumnus of the Graduate Institute at St. John's College ('10) and previously served on The Colonial Players Board as Education Director.

"RAVENSCROFT" is presented by arrangement with Concord Theatricals on behalf of Samuel French, Inc. www.concordtheatricals.com

The Colonial Players gratefully acknowledges the generous bequest from Roland Riley, a longtime patron whose gift helps ensure the future economic viability of our theater.



THE CAST



MACKENZIE CARROLL

(Gillian)

Mackenzie is very excited to be a part of her first production with The Colonial Players. She has worked with many local theater companies, which include The Talent Machine Company, AHS' Apex Arts program, Churchill Theater, and Compass Rose Theater. She most recently appeared as Donna in *Mamma Mia* with Annapolis High School. She would like to thank everyone who made this remarkable show possible. Enjoy!



COLLEEN ISAIAH

(Dolly)

Colleen hits the stage tonight in her second role with The Colonial Players. You may have seen her as Anna Mae in *By The Way, Meet Vera Stark*. Her past favorite roles include Sleepy in *Snow White*, Sid Sawyer in *Tom Sawyer*, and Andy Lee in *42nd Street*. Offstage, she loves studying residential architecture and interior design.



RICHARD A. MILLER

(Inspector Ruffing)

This is Richard's third production with The Colonial Players and his first time back on the stage since the start of the Covid-19 pandemic. Needless to say he is thrilled. Richard was last seen at CP in the role of Slender in Shakespeare's *Merry Wives of Windsor*. Other favorite credits include Proteus in *Two Gentlemen of Verona*, Ernst Ludwig in *Cabaret*, Don Pedro in *Much Ado About Nothing*, Philip in *The Lion in Winter*, and Inspector Trotter in Agatha Christie's *The Mousetrap*. Richard wishes to send a special thanks to his two sons Ewan and Finnegan, and his friends and family for their support. A very special thank you to his partner Ken for all his help and support and ability to keep him focused and fed through this process. When not on stage you can find Richard playing the role of Dr. Miller at KITSU Eye Care in Eastport. This one's for you Alice



HEATHER QUINN

(Mrs. Ravenscroft)

Heather has worked on numerous theater projects in the DC-Annapolis area both on the stage and behind the scenes. She is happy to be back onstage and working

with a splendid creative team. Some previous CP acting roles include: Dr. Cora Gage in *Going to St. Ives* (WATCH nomination), Lanie Wells in *Two Rooms* (WATCH nomination), Rose Arnott in *Enchanted April*, Hannah Jarvis in *Arcadia*, and Killaine Farrell in *The Clearing*. She also performed locally in several Dignity Players productions — *The Laramie Project*, *Dead Man Walking*, *Six Degrees of Separation*. Recently, she was the set designer and floor painter for *Crimes of the Heart*. Last year she helped coordinate a team of unsung heroes who devoted many months to the renovation of the CP costume loft. Heather thanks CP's volunteers and supporters who keep the theater alive; truly it takes a community to support a community theater.



ROBIN SCHWARTZ

(Mrs. French)

Robin is elated to be back on stage after last appearing at The Colonial Players in 2020 as Ruth Hoch in *Book of Days*. After graduating from Goucher College with a BA in Theatre, she directed and produced plays at Red Branch Theatre Company and Drama Learning Center. Recent projects include directing *Crimes of the Heart* and *Love, Loss, and What I Wore* at CP as well as producing *The Revolutionists* last season... Favorite credits include Dawn in *The Universal Language* (Outstanding Performance from the MD Community Theatre Festival), Thea Elvsted in *Hedda Gabler*, and Joan Dellamond in *The Babylon Line*. "Special thanks to my husband Daniel for supporting me tirelessly and unconditionally, to my sons Jacob and Henry for being Mommy's cheerleaders & to family and friends for their loving encouragement. So much gratitude to the whole CP team for the opportunity to create theater with some truly amazing people."



DEVIN THRASHER

(Marcy)

Devin is overjoyed to return to The Colonial Players' stage once again. After a painfully long 3 year hiatus, she was previously seen as Sophie Scholl in *The White Rose* and more recently as Miss "Kitty" Ogle in *The Belle's Stratagem* with The Rude Mechanicals. Thrasher has spent most of her academic career performing with UMD's The Maryland Shakespeare Players, in roles such as Friar Lawrence in *Romeo & Juliet*, Maria in *Twelfth Night*, and Rosalind in *As You Like It*.



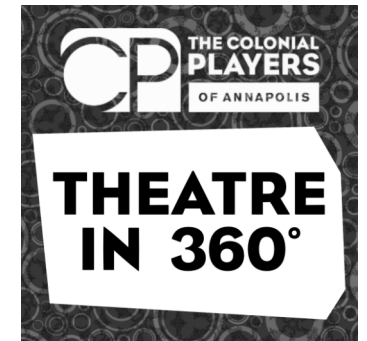
WHAT'S NEW...



THEATRE IN 360° PODCAST

Keeping audiences up to date with our current shows, discovering what is happening in and around the Annapolis theatre community, and taking a close up look at those that keep it running.

Available from our website and all good podcast distributors.



CP FALLEN HEROES

The Colonial Players will be holding an event on June 25th at 2:00pm to honor twelve members who made substantial contributions to the operations and quality of our productions in their lifetime. The celebration will last about 90 minutes at the Theater at 108 East Street. The honorees will be:

Bob Armbruster

Dick Gessner

Joanne Gidos

Barbara Gilstorf

Dottie Meggers

Jeanne Clay Plank

Bob Rude

Claire Smith

Bud Stupi

Gerry Valerio

Dick Whaley

Carol Youmans

All Colonial Players members are invited as well as family and friends of the honorees. Please RSVP to John.Purnell@TheColonialPlayers.org.



OFFICIAL MERCHANDISE

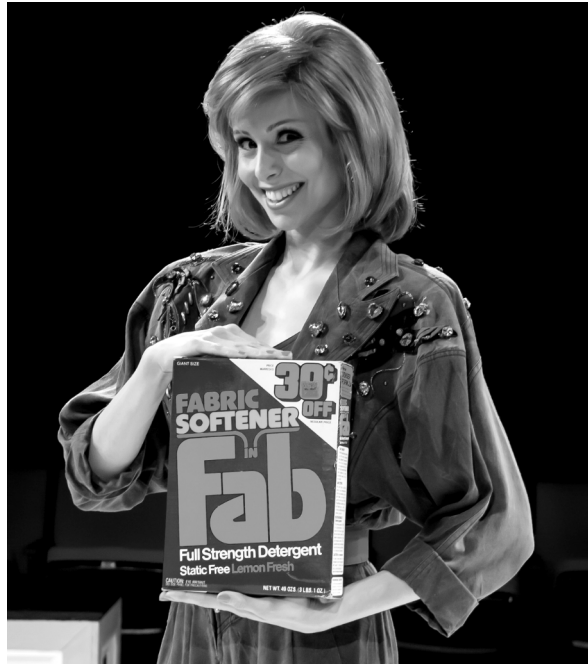


Show your support for theatre-in-the-round, all year round, with our new official merchandise!

We have commemorative pins, insulated tote bags, water bottles, and a limited supply of the 50th Anniversary book - just in time for our 75th Anniversary!

thecolonialplayers.square.site/

VOLUNTEERS ARE FAB!



DID YOU KNOW WE ARE ENTIRELY
VOLUNTEER RUN? FROM THE
USHERS TO THE DESIGNERS,
EVERYONE IS WELCOME HERE TO

COME AND PLAY!

IF YOU'RE INTERESTED IN
VOLUNTEERING IN ANY
CAPACITY,

PLEASE CONTACT:

HR@THECOLONIALPLAYERS.ORG



See everything
more clearly with



KITSU EYE CARE



WWW.KITSUEYECARE.COM



THE CREATIVE TEAM

RICHARD ATHA-NICHOLLS

(Sound Designer)

Richard set himself a new challenge with the sound design for *Ravenscroft*, he hopes he has succeeded. He is usually found in the tech booth designing sound/projections or designing and programming the stream camera cuts. His sound design has garnered multiple WATCH nominations. Richard has appeared on area stages and in his spare time helps run Discworld™ conventions. Love to C, A, P, K & I. Always in my heart, O.

CARRIE BRADY

(Set Designer / Set Painter)

Carrie is a familiar face around The Colonial Players, most often seen as costume designer. She has been itching to branch out, and after designing sets for her alma mater St. Mary's High School Theatre for several years, this is her first time designing a set for CP. Carrie's designs for St. Mary's High School Theatre have ranged from minimal to elaborate and proscenium to thrust stage arrangements. In addition to set and costume design, Carrie enjoys acting and most recently appeared onstage in CP's *Shiloh Rules* (2017) as Lucy Gale and as a last-minute stand in for Reverend Hale in *The Crucible* at St. Mary's (2022). Outside of theatre, Carrie makes her living as a librarian and spends the rest of her time reading, watching Star Wars, doting on her dogs, and making art.

TYLER HEROUX

(Stage Combat Choreographer)

Tyler has previously been in shows at The Colonial Players as an actor for both *Silent Sky* and *The White Rose*. He has always been interested in the art of fighting for entertainment. He recently choreographed a production of *Twelfth Night* for his former high school, and is excited to work with The Colonial Players again, this time as their fight choreographer!

HANNAH HOUSLEY

(Stage Manager)

Hannah is thrilled to be closing off the last five years spent at CP with all of the wonderful people of *Ravenscroft*. She is so grateful to have been part of such a wonderful community of makers and players, and looks forward to putting to use the CP spirit in the coming years. This biology nerd is off to explore the liberal arts! For the love of it! Special thanks to my ASM Abby, who has been such a fantastic partner in crime in rehearsal and backstage!

REBECCA KOTRABA

(Producer / Hair Designer)

Rebecca first started with The Colonial Players in 2007 and she is thrilled to be back again with CP. She is a director, actress, producer,

choreographer and hair designer. Rebecca is most noted for her youth theater programs and roles such as Miss Hannigan in *Annie* (CP), Aunt Eller in *Oklahoma* (2nd Star Productions) and Brenda in *An Act of the Imagination* (BCT at Bowie Playhouse). Rebecca lives in Annapolis and has two wonderful ginger teen boys. Alex Brady served as a co-producer on this as well as Director — thank you Alex!

CHRISTINA MCALPINE

(Costume Designer)

Christina is so happy to be back doing costumes again at The Colonial Players! Previous costume design credits at CP include *By The Way*, *Meet Vera Stark*, *Co-Designer for Casa Valentina* (Watch nominated); *It's a Wonderful Life: A Live Radio Play*; *The Cripple of Inishmaan*, *Boeing Boeing* (Watch Nominated for Makeup), *Dead Man's Cell Phone*, and *The Curious Savage*. Christina holds a BFA in Theatre from the University of West Florida. During the day she works in the Veterinary field and is also a very proud foster momma with Passport Animal Rescue in the Baltimore area. Special thank you to her partner, Yanick, for holding down the fort at home and being the best partner ever.

ERNIE MORTON

(Lighting Designer)

A shadow is light blocked by an object, much like the truth is blocked by lies in the show. Ernie was excited to work on this show for the opportunity to work with shadows. Lighting designers usually try to ensure that there are NO shadows anywhere on the stage; most of the time actors should be fully lit. But once in a while it's fun to play with shadows. Ernie has been working in Annapolis theater since 2014 as a stage manager and lighting designer with ASGT and The Colonial Players. He designed the lighting for *It's a Wonderful Life: A Live Radio Play*, *Silent Sky*, *Toward Zero* and *The White Rose* at CP and *Songs for a New World*, and *Drowsy Chaperone* at Summer Garden. Ernie also serves as Safety Manager and on the Board of Directors for CP as the Production Director.

CARRIE SHADE

(Properties Designer)

Carrie is thrilled to be part of the production team for *Ravenscroft*! At CP, she recently designed props for *The Book of Will* and served on the Play Selection Committee for Season 75. Previous props design experience includes many college productions at the University of Pennsylvania, where she also dabbled in acting, directing, and producing. *Ravenscroft* is particularly exciting because Carrie grew up reading (and occasionally writing) chaotic mystery stories, and "creepy old mansion" is her dream vacation destination. Thanks as always to Connie for her props expertise and to everyone at CP for being so supportive and welcoming!

RAVENS CROFT



written by
DON NIGRO

"RAVENS CROFT" is presented by arrangement with Concord Theatricals
on behalf of Samuel French, Inc. www.concordtheatricals.com

THE PLACE

A remote manor house in a rural English county

THE TIME

December, 1905

THE CAST

INSPECTOR RUFFING.....RICHARD A. MILLER
MARCY.....DEVIN THRASHER
MRS. RAVENS CROFT.....HEATHER QUINN
GILLIAN.....MACKENZIE CARROLL
DOLLY.....COLLEEN ISAIAH
MRS.FRENCH.....ROBIN SCHWARTZ

There will be one 15 minute intermission.

THE VIDEOTAPING OR MAKING OF ELECTRONIC OR OTHER
AUDIO AND/OR VISUAL RECORDINGS OF THIS PRODUCTION AND
DISTRIBUTING RECORDINGS OR STREAMS IN ANY MEDIUM,
INCLUDING THE INTERNET, IS STRICTLY PROHIBITED, A VIOLATION
OF THE AUTHOR(S)'S RIGHTS AND ACTIONABLE UNDER UNITED
STATES COPYRIGHT LAW. FOR MORE INFORMATION, PLEASE VISIT:
<https://concordtheatricals.com/resources/protecting-artists>