



A CHRISTMAS CAROL



DECEMBER 7-17, 2023

2023/2024 season



THE COLONIAL PLAYERS, INC.

108 East Street,
Annapolis, MD 21401

T: 410-268-7373

thecolonialplayers.org

BOARD OF DIRECTORS

Corporate Officers:

President..... Steve Tobin
 Vice President..... John Purnell
 Secretary.....Christina Hudson
 Treasurer.....George King

Directors:

Artistic.....Beth Terranova
 Education.....Sarah Wade
 Human Resources.....Lory Cosner
 Marketing..... Amy Atha-Nicholls
 Operations..... Wes Bedsworth
 Production.....Ernie Morton





FOLLOW US:
THECOLONIALPLAYERS

CPLAYERS

FRONT OF HOUSE

Box OfficeKaelynn Bedsworth
June Fordham
Cindy Dawson
Kevin Brennan
Barbara Ahr
Jeanie Mincher
Jane Chambers
 Subscriptions.....June Fordham
Cindy Dawson
Mary Beth Yablonski
 Usher Coordinator.....Loretta Lamar

PRESIDENT'S MESSAGE

A Wish for Peace

The "Sidewalk Ticket Sale" for our production of *A Christmas Carol* is a curious phenomenon. It takes a huge amount of planning and a large number of volunteers to pull it off, so in this world of online ticket sales, why do we still do it? Well, it's a tradition, of course, like the play itself. And it's fun for our cast members and volunteers as well. We get to put on the costumes and sing and hand out refreshments to everyone waiting in line. So it's definitely something we look forward to. But I think there's something more to it, as well.

As I was walking along the line before the sale started, I had the opportunity to talk with people who were waiting patiently for the sale to begin. Every single person I spoke with, whether they queued up at 8:00 PM the night before (a new record, by the way) or were just joining the line told me of how this show was such an integral part of their holiday season. But what really struck me this time was how EVERYONE in the line was in great humor - kind, patient, welcoming, appreciative ...to each other and to our volunteers. It was affirming to see so many people, in what should be (and maybe is) a very stressful situation at the start of a stressful season, being so good to each other.

And when so much divides us, when there are so many injustices at home and in the world that we just want to lash out and scream, may you all find a bit of comfort and solace knowing that we can come together in peace. If now for a humble but wonderful show about redemption, why not for more important things?

On behalf of the Board of Directors, I wish all of you a most happy and joyous holiday season, and may the coming year be filled with peace.

Merry Christmas, Chag Urim Sameach, Habari Gani, As-salamu Alaikum.

— STEVE TOBIN

The Colonial Players wishes to express heartfelt gratitude to our patrons. We appreciate your support!

Taking photographs and using any recording devices are strictly prohibited.

Smoking is prohibited throughout the building.

DIRECTOR'S NOTES

The Colonial Players has been producing Wade & Gessner's *A Christmas Carol* for 42 years, and I am delighted to be at the helm of this production, as we celebrate The Colonial Players' 75th season. As a member of the original cast, I remember so well the excitement of those first rehearsals in the fall of 1981. Rick Wade and Dick Gessner were in the throes of writing this show, and both would fly into the theatre in a seeming whirl of chicken-scratched papers and smiles. Every rehearsal brought a new lyric, a new harmony to learn, a new thrill of creating in the moment.

By that time, the team of Wade & Gessner had already collaborated on an impressive body of work penning many successful plays together, but I don't think even they had any idea how Annapolis would take their version of *A Christmas Carol* to its heart, nor that it would become the most successful theatrical production in the area. To date, there have been over 600 performances of this local gem.

Christmas is all about family and traditions, and The Colonial Players' *A Christmas Carol* has become a most beloved Christmas tradition for generations of local families, for audiences and theatre folk alike. I love that there are new faces in our audience, who are experiencing the magic and wonder of this production for the first time, and there are so many who bring their loved ones back year after year. The same is true of our cast, staff and crew. I am delighted that there are so many giving their time and talents to this production — onstage and backstage — who are brand new to The Colonial Players, and so many who come back year after year, because it wouldn't feel like Christmas without being a part of *A Christmas Carol* at CP.

So on behalf of the many who have poured their hearts into this production, Merry Christmas, Annapolis... and God bless us, every one.

- Debbie Barber-Eaton

ABOUT THE DIRECTOR



Debbie Barber-Eaton holds a degree in Musical Theatre from the Catholic University of America and studied cabaret at Yale. A director, performer and acting coach, she has worked in local and regional theatre. She taught acting, musical theatre and sketch comedy at Maryland Hall for the Creative Arts in Annapolis for 15 years. She has enjoyed a long and happy association with The Colonial Players, onstage and off, and takes pride in having been the original Charwoman in the inaugural production of *A Christmas Carol* in 1981. This 2023 offering of ACC is a kind of book end for her experiences at CP, and with the writing team of Wade & Gessner. Debbie's first project at CP was as part of the stage crew of another Wade & Gessner gem in 1969, *PUSS IN BOOTS*. Debbie appeared on the CP stage as "Martha" in *Who's Afraid of Virginia Woolf?*, which earned her a WATCH Award nomination

for best lead actress in a play. Most recently, she appeared as "Rose" in *Gypsy* at 2nd Star Productions and "Sarraghina" in *NINE* at CP. Debbie directed *Calendar Girls* for CP followed by *Guys & Dolls* for 2nd Star, which garnered the Ruby Griffith Award for All Round Production Excellence and a WATCH nomination for Debbie for her direction. She is proud to have received the last directing award CP gave for her direction of *The Robber Bridegroom*.

"As always, my love and thanks to my family and friends for supporting me, especially Neal, Eddie, Cathy, Donna, Paul, and Casey. I dedicate my work on this show and all my love to my husband, Neal, who had heart surgery during the rehearsal process of this show, and to my son, Eddie, and dear friend, Jason Vellon, who were by my side at the hospital. My work on this show could not have continued without the support of Sally Gilles, Andy McLendon and Mike Gilles. For Sharie."

ABOUT THE MUSIC DIRECTOR



Sally's love for this show — and her Annapolis bestie (director Debbie) has made the commute from the Delaware shore well worth it! She began performing at local theaters 46 years ago.

At ASGT, her favorite roles include Sandy in *Grease*, Irene Malloy in *Hello Dolly*, Peggy Sawyer in *42nd Street*, Kathy Seldon in *Singin' in the Rain*, as well as many, many chorus parts! At CP she performed in the very first *A Christmas Carol* production 42 years ago and appeared in *They're Playing Our Song* and *Is There Life After High School*.

Sally music directed several shows at ASGT as well as the CP 2010 production of this very show. She co-directed children's productions at The Maryland Hall for the Performing Arts with Debbie, as well as conducted musical

audition skills workshops as a guest instructor.

Sally served as the resident music director for The Annapolis Theater Project where she appeared in *In Celebration*, *Is There Life After High School* and *Kate's Requiem* featuring John Rutter's *Requiem*.

After earning a BS in Music Ed from the University of MD Sally taught piano and audition skills privately and taught music in the public schools.

"Life is good on the Delaware shore because of my amazing husband Michael, my precious daughter Katy — and sweet Emily Rose, our rescue chihuahua mix.

Here's to Debbie — Laverne to my Shirley! So many precious memories together! Thank you for everything! ♥"

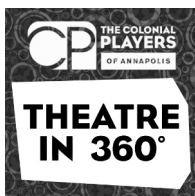
ABOUT THE ADAPTER / LYRICIST

RICHARD (RICK) WADE has been a member of The Colonial Players for more than 50 years, directing more than two dozen productions, occasionally acting, and serving as the theater's president and many years on its board. He has directed for numerous other professional, college, community, and dinner theaters in the Baltimore Washington area. He has written a dozen other plays and musicals and is a member of the Dramatists Guild. His adaptation and lyrics for *A Christmas Carol* with music composed by Dick Gessner, was written expressly for CP in 1981 and has been performed more than 600 times on the East Street stage. Rick and his wife, Jennifer, live in Arnold. They are particularly proud of their daughter, Sarah, and her husband, Eric Hufford, who perform and direct at The Colonial Players and their son, Andrew, wife Molly, and grandson, Henry.

ABOUT THE COMPOSER

DICK GESSNER collaborated with Rick Wade to write the music for *A Christmas Carol* and also wrote the music for Wade's adaptations of children's musicals *Pinocchio*, *Puss 'n Boots*, *Rumpelstiltskin*, and *Treasure Island*. He served as musical director for many productions in Maryland, including *Carousel*; *Fiddler on the Roof*; and *My Fair Lady* at Annapolis Summer Garden Theatre, and *Little Mary Sunshine*; *The Apple Tree*; *You're a Good Man, Charlie Brown*; *The Contrast*; and *Carnival* at The Colonial Players. Gessner died August 30, 2019, at the age of 90, but his spirit lives on in the wonderful music he wrote for *A Christmas Carol*.

THEATRE IN 360° PODCAST



Keeping audiences up to date with our current shows, discovering what is happening in and around the Annapolis theatre community, and taking a close up look at those that keep it running. Available from our website and all good podcast distributors.





THE CAST



SHANNON BENIL

(Mrs. Fezziwig)

This is Shannon's 6th time appearing in *A Christmas Carol* at The Colonial Players. Her first time was 30 years ago as Belinda Cratchit, and she went on to play Martha Cratchit, Fred's Wife twice, and the

Laundress. She has performed around Annapolis and Baltimore for these past 30 years and works as a VP of Accounting at an ad agency during the day. She is so thrilled to share the stage for the third time with her son, Nilsson, and especially grateful to start him on hopefully a long standing tradition of this holiday classic. Much love to her wife, Marcy, and of course Nilsson, who makes us so proud to be his moms.



NILSSON BENIL

(Tim Cratchit)

This is Nilsson's second show at The Colonial Players after doing *Best Christmas Pageant Ever* a few years ago. He recently played the Mayor of Munchkinland in *The Wizard of Oz* at Compass Rose Theater.

He is a fifth grader at Key School and loves videos games and his family. He plays piano and is learning guitar and is great at math and chess. He sends love and thanks to his two moms, Shannon and Marcy, and his pup, Sperry.



MAURA CAMPBELL

(Fred's Wife)

This is Maura's first production with The Colonial Players, and her first theatre performance since high school. *A Christmas Carol* combines three of her favorite things: books, music, and Christmas! She would like to

thank everyone at The Colonial Players for the opportunity to be a part of this classic show.



KEVIN CLEAVER

(Ghost of Christmas Present)

Kevin is excited to return to The Colonial Players for his second run of *A Christmas Carol*, the first being in the year Two Thousand and Ten. Other appearances at CP have been in *The Secret Garden* and *Jekyll & Hyde*.

Around the area he has appeared as Noah, Monsieur Andre, Horton, Mr. Bumble and in the quartet of *The Music Man*. Many thanks to Debbie and Sally for having him back!!



DARICE CLEWELL

(Charity Worker 1)

Darice has been involved with CP since she moved right next door to the theatre in 1986, just five years after the debut of *A Christmas Carol* on our stage. She has worked on several versions of our ACC, including choreographing, assistant directing, and designing make-up for one of the youngest Scrooges.

A former CP President, Artistic Director, Education Director and Play Selection Director, Darice has also choreographed *Working*, *Fiorello!*, *A Funny Thing Happened on the Way to the Forum*, *Cabaret*, *Is There Life After High School*, and others. Favorite acting appearances include Lottie in *Enchanted April*, Lotty in *Leftie and Lovage*, Sonia in *Vanya and Sonia and Masha and Spike*, M'Lynn in *Steel Magnolias* and Gingy in *Love, Loss, and What I Wore*. Local directorial efforts include *Quartet*, *Trying*, *Art*, *Stones in His Pockets*, and *The Shadowbox*.

She is relieved not to have to provide age-makeup for the Scrooge(s) this year; both gentlemen are adept at making themselves look far older on stage than they are in real life. Scrooge Reiter is Pop-Pop to her Cha-Cha for their 6 grandkids and two great-grand nieces. "Bless us everyone, most especially Saints Debbie and Sally, and this wonderfully supportive cast who have been the wind beneath my wings, making this the Most Marvelous Time of the Year. For my mother Irene, who gave up so much to provide the dance lessons I begged for, forever enriching my life with the gift of theatre."



ANDY "COZ" COSNER

(Tradesman / Ghost of Christmas Yet to Come)

Coz grew up in Baltimore with a tree-hugging, dirt-worshipping, art-loving family. His first (terrible) performance was at the Fells Point Corner Theater when he was only 11 years old.

Since then, he has delightfully played a plethora of roles (much to the dismay of his audiences). Most recently, he was seen as (an awful) Wild Bill Hickok in *Calamity Jane*. Additionally, he has (made everyone uncomfortable when he) portrayed Roger De Bris in *The Producers*, Cogsworth in *Beauty and the Beast*, Brad in *The Rocky Horror Show*, and Milos Glorious in *A Funny Thing Happened on the Way to the Forum*. But his favorite role of all time was when he had the opportunity to depict Nick Bottom in *A Midsummer Night's Dream*. (Hmmm... I wonder why?)

Beyond (atrocious) acting, Coz has tried his hand (to disastrous effect) at photography and general storytelling (ok... he's actually not that bad at that



THE CAST

one). Since his retirement from the military, he continues to work for the government (soaking up taxpayer resources) in a civilian capacity, and helping people to the best of his ability (such as it is) as a Minister of the Wiccan faith. Finally, Coz is married (so he claims) to a beautiful woman named Lory, with whom he shares the joy of parenting two incredible boys: Logan and Owen. (No jokes here. They really are incredible!)

This latest (dreadful) attempt at acting happens to be his debut with The Colonial Players.



PETER N. CREWS

(Undertaker's Man)

Peter is celebrating his 45th year as an active part of the Maryland/Virginia theater community. He began his training and performing with Children's Theatre of Annapolis (CTA), earned his BA in Dramatic

Arts from St. Mary's College of Maryland, and has since performed, instructed, and choreographed primarily on the East Coast for both professional and community theater companies. Peter returns to the CP stage having performed in *The Sunshine Boys* ('91), *Closer Than Ever* ('97), *Is There Life After High School* ('97), and as the choreographer for *A Christmas Carol* ('12). Peter thanks Vince, family, and friends, both far and near, for your unending support. Season's Greetings to all and to all a good night! Enjoy!



LINDSAY ESPINOSA

(Belle)

Lindsay is thrilled to be performing again with The Colonial Players! Her debut performance here was in 2016, playing Lily in *The Secret Garden*. Other local performances include the title

role in *Amelie* and Luisa in *The Fantastiks*. Lindsay has performed operatic roles of Adele (*Die Fledermaus*), Adina (*Elixir of Love*), and Musetta (*La Boheme*) during her professional career and has appeared as a soloist for performances of Bach's St. John Passion, Mass in B Minor, Mozart's *Exsultate Jubilate*, and Dvorak's *Te Deum*. Ms. Espinosa has taught private lessons in the Annapolis area at Naptown Sings and Plays and with her own private studio. She currently teaches voice lessons at Bethany Music Center in Ellicott City and music and movement at Preschool for the Arts at St. Anne's.



JULIE FOX

(Charwoman)

Julie is delighted to return to The Colonial Players stage after 13 years and is honored to be working with this mega-talented group. Julie originated the role of Belinda Crachit in the very first CP *A Christmas Carol* in

1981 and has also appeared as Fred's wife and

Mrs. Crachit. She was last seen as Mama Murphy in *Brightstar* at ASGT and Miss Hannigan in *Annie* with the Newtowne Players.

Julie has also performed original stand up comedy throughout Maryland. She was a regional finalist in the last season of Nick@Nite's reality television show, the Funniest Mom in America.

Julie sends her love to her dear husband, Joel, and amazing twin daughters, Suzanne and Sarah. Hilli-ho! Chirrup!

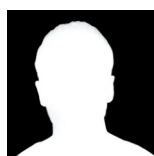


BRAYDEN GERAGHTY

(Scrooge as a boy/Turkey Boy)

Brayden is a 5th Grade student at St. John the Evangelist School. He loves to sing, dance, and be one with God. He started acting when he was 3 and has starred in many plays at Theater in the park including

Winnie the Pooh, *Beauty and the Beast*, *Descendants* and many more. He is excited to play boy Scrooge and turkey boy in *A Christmas Carol*. He has enjoyed getting ready for his first performance with The Colonial players and looks forward to many more. He thanks his family for all of their support.

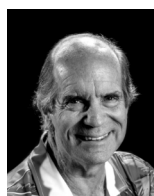


COLE GERMAN

(Peter Cratchit/Dick Wilkins)

Cole is an 11th grader at Broadneck High School. This is Cole's first performance with The Colonial Players. Recently Cole played the role of Prince Eric in *The Little Mermaid*. Some other favorite roles were Jesus in *Jesus*

Christ Superstar, Doody in *Grease*, JD in *Heathers*, Ryan in *Lost and Found* and Adam in *Freaky Friday*. Some of his hobbies include playing piano, guitar, drums, skateboarding, and playing golf. He hopes you all enjoy the show.



DUNCAN HOOD

(Ebenezer Scrooge)

Great to be back, and that's a fact. Duncan Hood is a repeat offender here at The Colonial Players, having performed in various roles over the last 38, can you believe it, years. Duncan is a winner of a

Washington Area Theater Community Honors (WATCH) award for Best Supporting performance in *Mornings at Seven*, and over the past 20 years, he has performed roles as: George in *Moon over Buffalo*; Scrooge in *A Christmas Carol*; Emcee in *Cabaret*; Flint in *Something's Afoot*; The Man in *52 Pickup*; The Playwright in *Enter the Guardsman*; VanSwieten in *Amadeus*; Jethro Crouch in *Sly Fox*; Michael in *Dancing at Lughnasa*; The Narrator in *Blood Brothers*; Inspector Rough in *Angel Street*; Hysterium twice and Psuedolus once in 3 productions of *A Funny Thing Happened on the*



THE CAST

way to the Forum; Major General in two productions of *Pirates of Penzance*; Pap in *Big River*; Porter and Ross in *Macbeth*; and Dr Kalmár in Studio Theater's production of *A New Brain*.

Duncan also appeared in the 2011 Clint Eastwood film *J. Edgar* as the radio announcer, and his voiceover credits include national and regional commercial, book & industrial projects. Video game credits include three characters in *Star Trek: Next Generation*; and 5 characters in *Fallout 3*; by Bethesda Softworks.

Duncan has been an international sailing instructor/trainer for the American Sailing Assn. for 38 years and holds a 100 ton USCG Master's license.



MILA KOPICKI

(Fanny)

This is Mila's first production with The Colonial Players. She is so excited to be playing the role of Fanny. Previously, Mila made her acting debut as The Great White Shark in her elementary school's production of *Go Fish*.

Mila sings in her school's chorus and plays clarinet in the school band. She also enjoys singing with the All Children's Chorus of Annapolis. In her free time Mila loves to play soccer and basketball, ride bikes with friends, and read.



KATHERINE A. LANG

(Fred's Guest)

Kathy returns to The Colonial Players stage after a several decades hiatus, and is thrilled to work with friends old and new. At CP, she was seen in *A Christmas Carol*, *Fiorello!*, and also stage managed many

productions including *Fences*, *A Little Night Music*, and more. She was most recently seen in *Matilda* at 2nd Star Productions. Special thanks to Nana, and to her vocal coach, Maureen Brown. As Dad would say, "It's Magic Time!"



ERIC LUND

(Ghost of Christmas Past)

Eric's last work at CP was on stage playing Gloria in *Casa Valentina* and before that he appeared as Rod in *Calendar Girls*. He designed lights for *The Secret Garden* and was nominated for a Washington

Area Theatre Community Honors award for his designs for *Side Man* and *Venus in Fur*. He has worked extensively in area theaters including Dignity Players, Annapolis Summer Garden Theatre, Vagabonds in Baltimore, and others. On CP's stage, he has appeared in productions of *Rebecca*, *The Clearing*, and various iterations of *A Christmas Carol*. He appeared in Dignity Players' productions of *The Laramie Project*, *Gross Indecencies*, and *The*

39 Steps. He has directed for CP with *The Voice of the Prairie* and two seasons of *A Christmas Carol* and for Dignity Players with a production of *The Vagina Monologues*. He is a founding board member of Annapolis Pride. And he is very honored to be working with this amazing cast and crew. And, as always, he thanks his husband of 26 years, Mickey, for his support and endless patience!



CECE MCGEE-NEWBROUGH

(Laundress)

CeCe is thrilled to be making her debut in this local Christmas classic. Shout out to Rick Wade and the late Dick Gessner for creating such wonderful music and lyrics. CeCe has performed in a number of plays at The

Colonial Players... favorites include *Born Yesterday*, *Sylvia*, *House of Blue Leaves*, and most recently *Boeing Boeing* and *Watch on the Rhine*. In her spare time, CeCe works as a cashier at Giant Food in Annapolis (plug).

"Thank you to my family, cast, crew and especially Debbie and Sally for an amazing experience."



G. ALLAN NOYES

(Charity Worker 2)

Glenn's musical career began at the age of 5 in front of a Baptist congregation in Stonington, CT. School chorus, band and musical plays were part of his early school years which were abandoned for

musical endeavors in contemporary rock and roll. Though having adequate skills as a drummer, the love for singing and performing kept Glenn on the front part of the stage. His last musical endeavor ended in 2017 after ten years as lead singer and front man for The Assisted Living Band who performed oldies, Motown and early rock and roll locally and beyond. During which time Glenn was known for melding comedic impersonations into their shows. Years later, the desire to be more active in dramatic performing has lead Glenn to be gratefully employed today with The Colonial Players of Annapolis.



ERICA MILLER

(Mrs. Cratchit)

This is Erica's second time appearing in *A Christmas Carol*. She loves the show and is thrilled to be portraying Mrs. Cratchit. She sends her love to her own brood, who have graciously given her time away

from them for rehearsals and performances. This experience has made Erica feel blessed as anyone alive. She hopes you enjoy the show.



A CHRISTMAS CAROL



Play and Lyrics by
RICHARD WADE

Music by
RICHARD GESSNER

Directed by
DEBBIE BARBER-EATON

Music Directed by
SALLY GILLES

THE PLACE

Victorian London

THE TIME

December 24th, 25th and 26th in the year 1843.

MUSIC SYNOPSIS

Overture Orchestra
Christmas Eve in London The Carolers, Londoners
That Most Marvelous Time of the Year Fred, Bob Cratchit
Mind Your Own Business Scrooge, Londoners
As If It Were Yesterday Scrooge
Hilli-Ho! Chirrup! Mr. and Mrs. Fezziwig, Guests
In Your World Belle
Cornucopia Ghost of Christmas Present, Londoners
Bless Us All Cratchit Family
One Fine Funeral Undertaker's Man, Laundress, Charwoman
Keeping Christmas Scrooge
Finale Scrooge, Company

THE MUSICIANS

PIANO/CONDUCTOR.....LINDA CHRISTENSEN

BASS.....REID BOWMAN

PERCUSSION.....BILLY GEORG

Musical Numbers staged by Debbie Barber-Eaton & Sally Gilles with Peter Crews

THE CAST

EBENEZER SCROOGE!.....Duncan Hood / Jim Reiter
 BOB CRATCHIT?.....Nathanael Quay / Jason Vellon
 NEPHEW FRED.....Matthew Rigby
 CHARITY WORKER ONE.....Darice Clewell
 CHARITY WORKER TWO.....G. Allan Noyes
 TRADESMAN.....Andy "Coz" Cosner
 GHOST OF JACOB MARLEY.....Jeff Sprague
 GHOST OF CHRISTMAS PAST.....Eric Lund
 SCROOGE AS A BOY.....Brayden Geraghty
 FANNY.....Mila Kopicki
 DICK WILKINS.....Cole German
 YOUNG SCROOGE.....Matthew Rigby
 MR. FEZZIWIG.....John H. Purnell III
 MRS. FEZZIWIG.....Shannon Benil
 BELLE.....Lindsay Espinosa
 GHOST OF CHRISTMAS PRESENT.....Kevin Cleaver
 MRS. CRATCHIT.....Erica Miller
 BELINDA CRATCHIT.....Corawyn Quay
 PETER CRATCHIT.....Cole German
 MARTHA CRATCHIT.....Noelle Wiser
 TIM CRATCHIT.....Nilsson Benil
 FRED'S WIFE.....Maura Campbell
 PARTY GUEST.....Katherine A. Lang
 GHOST OF CHRISTMAS YET TO COME.....Andy "Coz" Cosner
 UNDERTAKER'S MAN.....Peter N. Crews
 LAUNDRESS.....CeCe McGee-Newbrough
 CHARWOMAN.....Julie Fox
 TURKEY BOY.....Brayden Geraghty

1. The role of Ebenezer Scrooge will be played by:

Duncan Hood on 12/8, 12/9 @ 8pm, 12/14, 12/16 @ 2pm & 4:30pm, 12/17.

Jim Reiter on 12/7, 12/9 @ 2pm & 4:30pm, 12/10, 12/15, 12/16 @ 8pm.

2. The role of Bob Cratchit will be played by:

Nathanael Quay on 12/8, 12/15, 12/16, 12/17.

Jason Vellon on 12/7, 12/9, 12/10, 12/14.



THE CAST



JOHN H. PURNELL III

(Mr. Fezziwig)

This is John's first appearance in *A Christmas Carol* since joining CP 32 years ago. That egregious wrong has now been made right. John, like Fezziwig, owns his own business and places great emphasis on the happiness of his employees, especially in the Holiday season. John, like Fezziwig, is a portly and jovial man of high spirits and good cheer. John, like Fezziwig, is a baritenor. John, like Fezziwig, is married to a wonderful woman (Claire) who shares his joy of life and gave him two children. Unlike Fezziwig, John is CP's Vice President and Lighting Consultant. On stage and off, John has been associated with twelve CP shows over the last six years. He most recently appeared on the CP stage as Officer Welch in *Rumors*. Before that you may have seen John as Colonel Mustard in *Clue - The Musical* or John in *If Men Played Cards as Women Do*. He has taught two Theatrical Lighting Design summer workshops for CP. John performed the role of Mayor Josiah Dobbs in ASGT's *Bright Star* (Ruby Griffith Best Musical) and Warner Purcell in *Bullets Over Broadway*. He has received two WATCH nominations for his lighting. John's seasonal wish is for everyone to stop worrying, look about, and find the awesome joy in life!



NATHANAEL QUAY

(Bob Cratchit)

Nathanael is excited to perform in his first role at The Colonial Players after a 15 year hiatus from the stage! His past roles include Mercutio in *Romeo and Juliet*, Benedick in *Much Ado About Nothing*, various dancing & supporting roles in *Fiddler on the Roof*, and a brief foray into Murder Mystery Dinner Theater. Nathanael is grateful for the warm welcome of the Annapolis theater community, the chance to sing and dance with his vivacious daughter Corawyn, and for the love and support of his wife Ellen, who encouraged him to try acting again. This has been incredibly life-giving! Thank you.



CORAWYN QUAY

(Belinda Cratchit)

Corawyn has had an interest in musical theatre for years, performing in many shows like *The Grinch*, *Camp Rock*, *And Descendants Jr.* At The Children's Theatre of Annapolis, and a recent Cabaret at Silhouette Stages. She is so excited to be acting in *A Christmas Carol*, and loves learning new music and acting with her cast mates. She would like to thank her friends and family for supporting her.



JIM REITER

(Ebenezer Scrooge)

This is Jim's third time around as Scrooge (2005, thanks to the show's creator, Rick Wade; 2010, thanks to Debbie and Sally who again are at the helm this year; plus 2016 as a too-gray Bob Cratchit) and he's very happy to again be Scrooging with friends old and new and to be sharing the role with his good friend, knot instructor and Captain, Duncan Hood. Jim first appeared at CP in 1995 as Boolie in *Driving Miss Daisy*; since then some of his favorite CP roles include several characters in *Hauptmann* (Washington Area Theater Community Honors Award, Outstanding Featured Actor), Ben Hecht in *Moonlight and Magnolias*, Vanya in *Vanya and Sonia and Masha and Spike* (with his love Darice playing his sister Sonia ... it's complicated), and Serge in last year's production of *Art*. Jim also directed CP's 2015 production of *Side Man*, which garnered five WATCH nominations including Best Director. Jim spent many years acting and directing in Bowie with Musicomedy Productions and its successor, 2nd Star Productions, and he has appeared elsewhere at Annapolis Shakespeare, Bay Theater, Compass Rose, and Annapolis Summer Garden Theater. His favorite roles are hubby to Darice (whom he met while serving on CP's Director Selection Committee; see, theater DOES enrich your life!), Dad to Joe, Kelly and Katie Rose, and PopPop to Caleb, Chloe, Corey, Christa, Emma and Miles, all of whom have learned to laugh heartily at his Dad/PopPop jokes if they want to swim in his and ChaCha's pool and eat her homemade ice cream.



MATTHEW RIGBY

(Fred/Young Scrooge/Lighting Designer)

Matt is relatively new to Maryland, but he has found a great family in the Annapolis theater community. He has been involved in productions non-stop since October 2021 both as an actor and as a member of the crew. His most recent acting role was in ASGT's production of *Head Over Heels*.



JEFF SPRAGUE

(Jacob Marley)

Jeff has directed or performed in many shows with CP since 2007, but this is his first time with *A Christmas Carol* (most recently, he directed *Agnes of God* in 2022). As a native Annapolitan, he first saw CP's ACC as a kid in the 1980s, and he is excited to finally take part in the tradition. Thanks to Debbie for the opportunity. Love to Kathleen, Ollie, and Simon.



THE CAST



JASON VELLON

(Bob Cratchit)

Jason is thrilled to be a part of this piece of history for The Colonial Players for a third time. Past roles here include Lawrence/Liam from *Calendar Girls*, which earned him a WATCH Award for Best Cameo

in a play, Guido Contini from *NINE* (WATCH Award Nominated for Best Lead Actor in a musical), Clifford Glimmer in *Side Man* and Jonathan/Miranda in *Casa Valentina*. He has performed at several local theaters. Jason has been trained at The American Music Dramatic Academy and has performed professionally in commercials, and films as well as theater. Special thanks to Debbie, Sally and Andy. "You ladies are the best". Jason would also like to thank the cast for being so amazing. This performance is for his two children, "Love you Gray and Annabelle", and also his wife. "Love you Ashley. Thank you for allowing me to play". Enjoy!!



NOELLE WISER

(Martha Cratchit)

Noelle is a 15 year old sophomore at Sherwood High School and has performed with educational theater companies including Young Artists of America (YAA) at Strathmore and Broadway Artists Alliance

for several years. She is excited to make her debut with The Colonial Players! Most recently Noelle appeared in her first professional production as Glinda in *The Wizard of Oz* at Compass Rose Theater. She was featured as a solo vocalist at Don't Tell Mama's Come Back Cabaret and A Class Act NY Benefit for Gun Safety at the Triad Theatre. She is a member of Signature Theater's 2023-24 Conservatory for teens, trains vocally with Celine Mogielnicki from Catholic University and receives acting training from the Barrow Group in NYC.

What the dickens does that mean?



If you'd like to know more about the background on some of the names, characters, places and words used throughout *A Christmas Carol*, dramaturg Neal Eaton has compiled a handy list — from Cornocopia to Wassail and all manner of things in between...



OFFICIAL MERCHANDISE

**KEEPING
CHRISTMAS**
all the year long



Show your support for theatre-in-the-round, all year round, with our top-notch official merchandise!



We have commemorative pins, insulated tote bags, water bottles, and a limited supply of the 50th Anniversary book - just in time for our 75th Anniversary! Just another way to keep a little Christmas

<https://thecolonialplayers.square.site/>



THE CREATIVE TEAM

WES BEDSWORTH

(Sound Designer)

Wes has been volunteering with The Players since early 2007 when he was a sound technician for *Moon Over Buffalo*. He's since taken on other roles including sound designer, lighting designer, lighting programmer, special effects coordinator, and technical consultant on more shows than he can count. Wes currently serves as Operations Director on the Board, where his responsibilities vary from plumber to electrician to network administrator to HVAC technician to locksmith to general handyman, depending on what broke this time. He also serves as Technical Director on the Production Team. By day, Wes works for Cardinal Engineering, proudly supporting the United States Navy's COLUMBIA Class submarine program. Wes sends his love to his wife, Kaelynn; his parents; sister, Susan; brother-in-law, Jon; and newly minted puppy, Penny. "Abby & Charlie - always in our hearts."

MIKE GIDOS

(Producer)

Mike has been involved with CP for almost forty years. He served on the BOD, including tenure as the corporate treasurer as well as the play selection, directors selection and finance committees. He and his late wife JoAnn worked in the Box Office and ushered at over one hundred performances. He has a soft spot for *A Christmas Carol* especially since two of his granddaughters were involved in the production. Merry Christmas!!!

BARBARA MARDER

(Producer)

Barbara is delighted to be associated with this production of *A Christmas Carol*. Although she has seen performances since the show debuted at The Colonial Players, and she has been associated with the theatre for almost that long, this production marks her first time working on any aspect of the show. It is a further delight to be with a fine cast of new and experienced Players as well as the Director Debbie Barber-Eaton and Music Director Sally Gilles, both of whom she first worked with as her acting students quite some years ago. Barbara is retired from serving as chairman of Performing Arts at Anne Arundel Community College where she taught theatre classes and directed many shows. For The Colonial Players, she has served in a variety of capacities from board member to director to producer to member of selections and scholarship committees.

ANDY MCLENDON

(Stage Manager)

A Christmas Carol is the latest of many shows Andy has stage managed since she first got involved with The Colonial Players in the 1970s. Most recently, she was the stage manager for the opening show of Season 74: *Art*. Andy has volunteered for a number of jobs at CP, but her task of choice is stage managing. Andy is excited to be back at The Colonial Players and working with such an amazing production staff and cast. The list of favorite theatre projects becomes more and more difficult to select; there have been so many memorable experiences.

CHARLOTTE ROBINSON

(Properties Designer)

Charlotte has been a member and volunteer with The Colonial Players for over 40 years and joined the Christmas Carol family in 1993. Her work has been behind the scenes, usually as light or sound tech, stage crew, stage manager, and props assistant or designer. She has also served on the Board of Directors and several committees. *A Christmas Carol* this year is special for her because it brings together not only new cast and staff members, but many who have done the show with her from the beginning. A special thanks and love to her husband Jim who introduced her to CP and to all the volunteers and patrons who bring this story to life.

JIM ROBINSON

(Set Coordinator)

Jim began volunteering at The Colonial Players in 1984. He operated the light board and sound equipment as well as working as stage crew and set/props builder for many shows. After retiring in 2003, Jim joined Dick Whaley and Ted Yablonsky as permanent set building crew. He enjoys working on shows where his wife Charlotte is also involved.

LINDA SWANN

(Costume Designer)

Linda is happy to be back working in one of her favourite eras with some of her favorite people. Her work was last seen here for *Tartuffe*, and *The Book of Will* but you may also have caught her work at 2nd Star's *Something Rotten* or at RMT for *Into the Woods* recently, though she is no stranger to costuming for a variety of theater companies around the area. When not playing with live Barbie dolls, she spends her time encouraging young minds to grow in the AACPS system. She'd like to thank God for this opportunity, and the cast and crew for their infinite patience. Enjoy the show.

TO OUR CONTRIBUTORS

Thank you for your support. Your generous gifts help us to continue to provide educational and training programs, encouragement and entertainment to all who are interested in dramatic arts.

LIFE MEMBERS

Chris Beaton
Fred Fishback
Bill & Peggy Griswold
Daniel G. Higgs
Judi Hilton-Hyde
Frank McLane Hyde
Ronald Powell
Dr. & Mrs. James W. Ross
Col. USMC (Ret.) Richard W. Smith
Mrs. Benjamin B. Wills, Jr.

EXECUTIVE PRODUCERS

(\$1,000+)
James W. Cheevers
Margaret Ross

PRODUCERS

(\$500 - \$999)
Tim & Kris Brown
Joanne & Michael Davis
Lois & Noel Milan
Bob Sherer
Christopher K. Whiter

DIRECTORS

(\$200 - \$499)
Bill Allen & Jenna Lane
Neal Eaton & Debbie Barber-Eaton
Janet & Nick Berry
Fred & Susan Eckert
Hallock Family
Bill & Maryellen Hartman
Karen Hirakawa
Jerry & Lynne Hoot
Meg Hosmer
Gary & Janice Jobson
Thomas Lanyon
Meredith McQuoid-Greason
Lynne Malley
Joyce C. Miller
Manfred Muecke
Phil & Sandy Ourisson
John Purnell
Jim & Charlotte Robinson
Fred Sussman & Sharon Kolstad
Philip Tawes
Betty Thompson
John & Judi Wobensmith
Mary Beth & Ted Yablonski

STAGE MANAGERS

(\$125 - \$199)
Susan Armstrong
Don & Lucy Arthur
Jim & Judy Barrowman
Bernie & Irene Bise
Pat & Karen Brown
Gale Erbe
Patti & Mark Gillen
Tylar & Carol Ann Hecht
Kathy & Dave Larrabee
Pamela Mussenden
Joan & Rolph Townshend
Pat & Stephen Troy

DESIGNERS

(\$75 - \$124)
Anonymous
Ken Apfel & Caroline Hadley
Dick & Jill Breen

Nancy Brosnihan
Judith Clark
Lois Coon
Cynthia Dawson
Julia Erickson
Doris Gomoljak
Peter Graze
Deborah Hoffman
Jerry Hopkins
Helena & Bill Hunter
Margaret Johnson
Christopher C. Jones
Bernard & Hannah Kaufman
Michael J. Keller
Helen Fisher Leitch
Jean Mincher
Hank & Betsy Mortimer
John & Constance Robinson
Michele & Earl Schaffer
Judith Schuyler
John Woolums
John & Judy Youngblood

SPONSORS

(\$50 - \$74)
Anonymous
Linda Allen
Sandra Altherr
Kenneth & Lorraine Appleton
Raymond Bracy
Belinda & David Butler
Carol Carman
Jane Chambers
Jim & Pat Church
Nadine E. Clark & Beverly J. King
Stephen Cohan
Judy Crews-Hanks
Carol DeGarmo
Mary Dragos
Gordon & Brenda Duvall
Sheldon Goettel
Valerie Gutterson
Douglas Hannum
Jennifer Haythornthwaite
Dave Holmes
Dianne & Duncan Hood
Elia & John Howser
Katy Jensen
John Kadas
Carolyn Kirby
Deborah Kontar
Anza Manning
Barbara Marder
Heather Millar
Susan B. Miller
Para & Miller Families
Priscilla Mitchell
Barbara Morris
Maggie & Bob Mulcrone
Carla Mulhern
Jane Nelson
Laurie Nolan & John McClure
Barbara Novak
Carolyn O'Reilly

J & J Panitz
Kim Piasecki
David Pierce
David Psilas
Michael & Judy Roblyer
Maryland CPR and Safety
Priscilla & Bob Schneider
Beth Shoults
Scott & Sharon Smith
Larry & Kay Snyder
Gail & Jim Wise
Fran & Maureen Wright

PATRONS

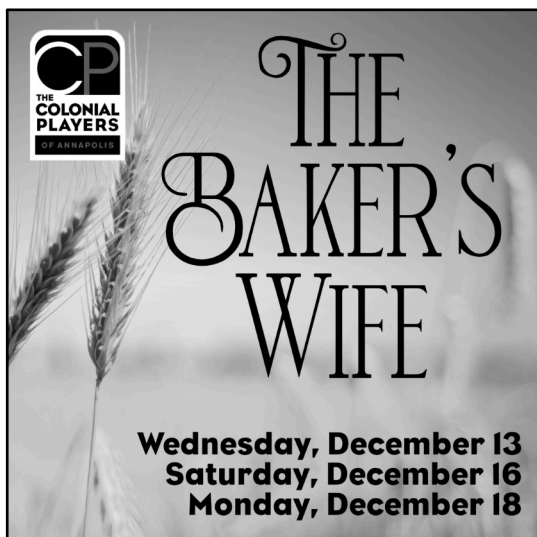
(\$35 - \$49)
Denise Aguiar
Anonymous
Carol M. Amoia
Damon Bender
Jan Blome
Fay Blueford
Raymond Bracy
Bob Brewer
Pamela Brune
Suzanne Colbert
Liz Creighton
Dianne Crews
Lois Evans
Stephen Evans
Margit & Darren Fox
Eugenia A. Judge
Harun Kazaz
Craig Leffler
Jean Little
Patricia Lotuff
Debra McGhee
Kathleen Mooy
Margaret Murray
Ed & Jeanne Paglee
Kathy Parrott
Tanya Plascencia
Lynn Repasky
Veronica Roberts
Joseph Slayton
Eugene Valendo
Maureen Van Besien
Dona Weingarten
Stephen Wrage



The Colonial Players gratefully acknowledges the generous bequest from Roland Riley, a longtime patron whose gift helps ensure the future economic viability of our theater.



UPCOMING AUDITIONS



The Baker's Wife

Music & Lyrics by Stephen Schwartz

Book by Joseph Stein

Directed by Michelle Harmon Bruno

Performance Dates: March 1 - 30, 2024

The bickering residents of a rural village in 1935 Provence, France, have been without a baker for seven weeks. They finally find peace and contentment in the new baker, Aimable, and his attractive young wife, Genevieve. However, when Genevieve is lured away by a handsome young gigolo, the middle-aged baker loses all zest for life and baking. When he refuses to bake, the villagers must work as a team to bring Aimable and Genevieve back together.

All roles are open. The show requires 13 - 20 performers.

Pre-registration is required for these auditions, please see website for details.

Did you hear - we are all Volunteers?



**THE COLONIAL PLAYERS IS
ENTIRELY VOLUNTEER RUN. FROM
THE USHERS TO THE DESIGNERS,
EVERYONE IS WELCOME HERE TO**

COME & PLAY!

**IF YOU'RE INTERESTED IN
VOLUNTEERING IN ANY
CAPACITY,**

PLEASE CONTACT:

HR@THECOLONIALPLAYERS.ORG



PRODUCTION STAFF

Director.....	Debbie Barber-Eaton
Music Director.....	Sally Gilles
Producers.....	Mike Gidos, Barbara Marder
Stage Manager.....	Andy McLendon
Stage Crew	Erica Kopicko, Mike Gidos, Beth Ann Gidos
Dance Captain.....	Peter N. Crews
Set Coordinator	Jim Robinson
Properties Designers.....	Charlotte Robinson, Mary Beth Yablonski, G. Allan Noyes
Lighting Designer.....	Matthew Rigby
Sound Designer.....	Wes Bedsworth
Costume Designer	Linda Swann
Set Decoration	Jane Elkin, Edd Miller
Floor Design.....	Leah Wall
Set Painters.....	Barbara Bartos, Maura Campbell, Andy "Coz" Cosner,Barbara Marder, Edd Miller, G. Allan Noyes, Becki Placella
Lead Carpenter.....	Ted Yablonski
Set Crew.....	Jim Robinson, Bob Mumper, Ken Kaiser, Edd Miller, Pete McDevitt, Harvey Steinfeld
Video Stream Designer.....	Sue Ann Staake
Video Stream Producer.....	Richard Atha-Nicholls
Booth Technicians.....	Wes Bedsworth, Kevin Brennan, Christina Hudson
Play Consultant.....	Mary Fawcett Watko
Dramaturg.....	Neal Eaton

IN ASSOCIATION WITH

Poster and Program Cover Design.....	Drama Queen Graphics
Photographer	Brandon Bentley

ACKNOWLEDGMENTS

Mike Gilles
G. Allan Noyes
Andy "Coz" Cosner

Want to Keep Christmas a little longer? Now you can!

This production of A Christmas Carol will be available to stream on demand from December 17 — January 1, 2024.

A CHRISTMAS CAROL



www.showtix4u.com/events/thecolonialplayers



Running low on the milk of human kindness?
Try GALWAY BAY AUTHENTIC IRISH EGG NOG instead!

Eggnog born deep in the heart of the Irish Countryside...



63 Maryland Ave.
Annapolis, MD 21401

Much more than a festive drink, this handcrafted beverage is a Galway Bay family tradition! Slainte!

